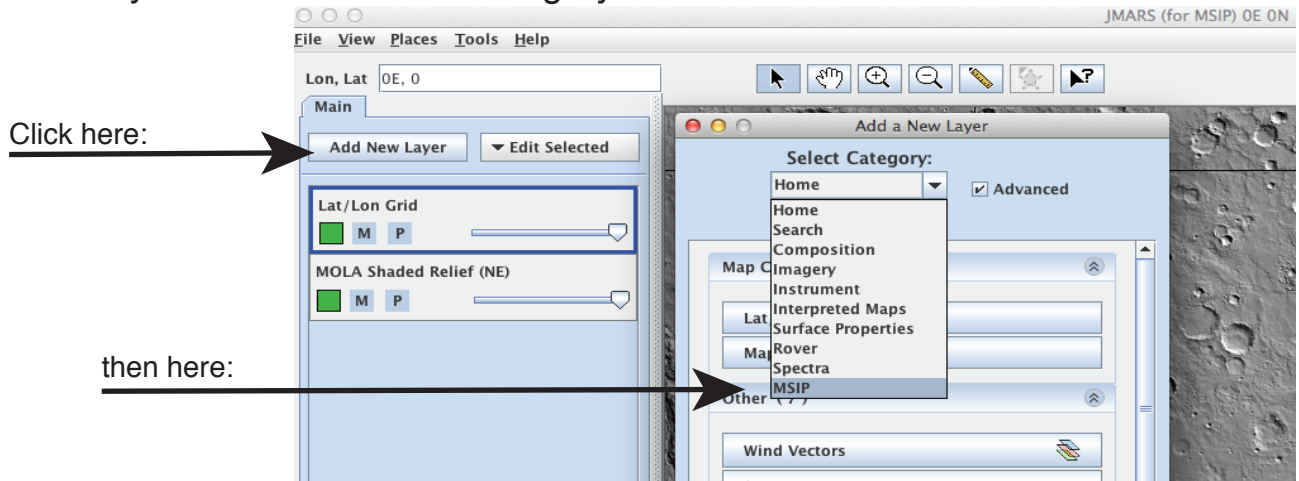




JMARS

A Quick Start Guide for New Users

Add a New Layer > Choose MSIP Category



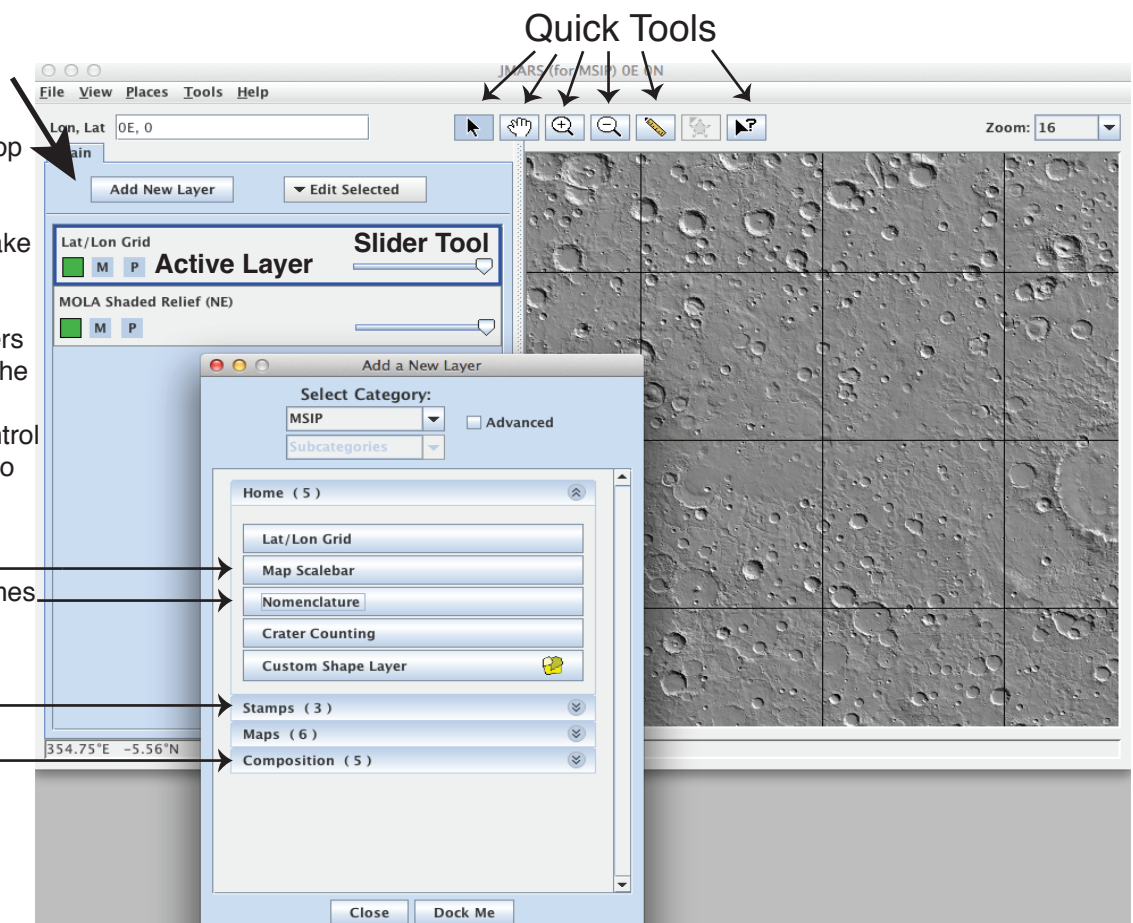
Layer Manager:

Layers are stacked on top of each other. Top layer will cover lower layers. Use the slider tool to make layer less opaque. Click and drag layers to reorganize or move layers to the top. Layers with the dark blue box are active layers in control. To control a different layer, click it to outline in dark blue.

Adds a scale bar
Adds feature/region names

Orbital image sets

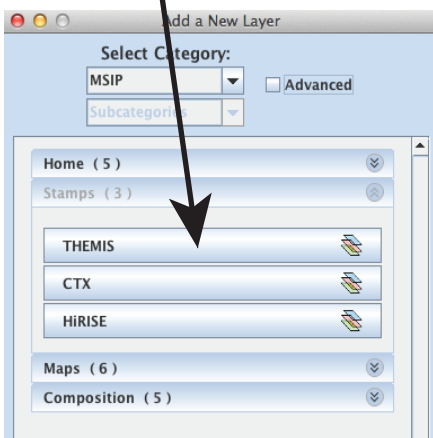
Mineral map sets



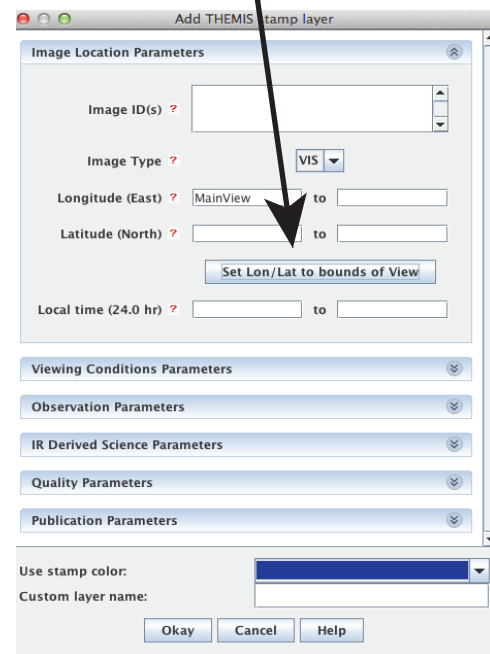


To View Images:

Click THEMIS



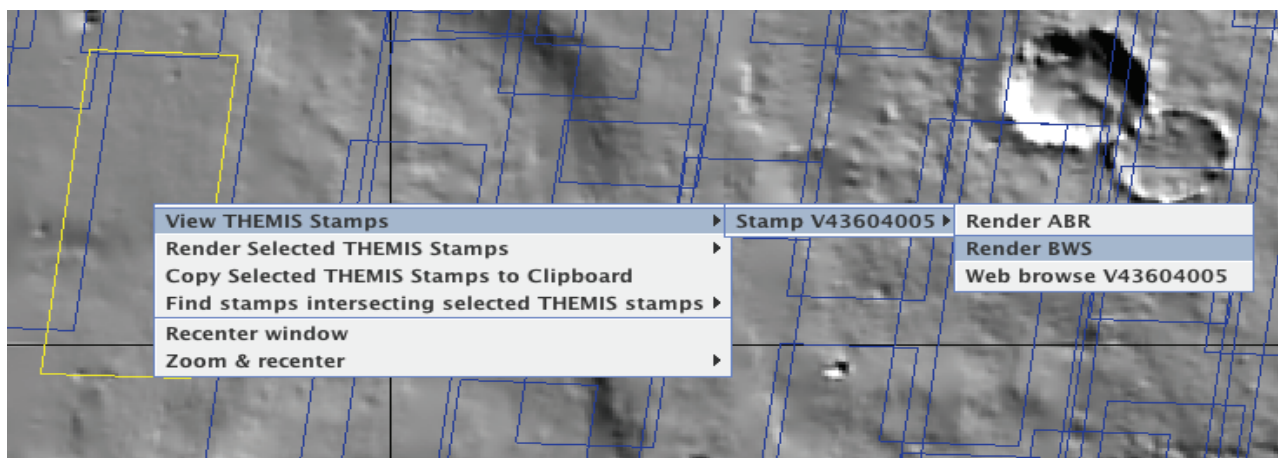
Click Set Lon/Lat to bounds of View



(Query Tab)

To render (see) THEMIS image:

Select the THEMIS stamp (turns yellow) > Right Click > View THEMIS Stamps > Stamp # V_____ > Render BWS



To access JMARS for MSIP visit: <http://jmars.mars.asu.edu/downloads/jmars-msip.jnlp>